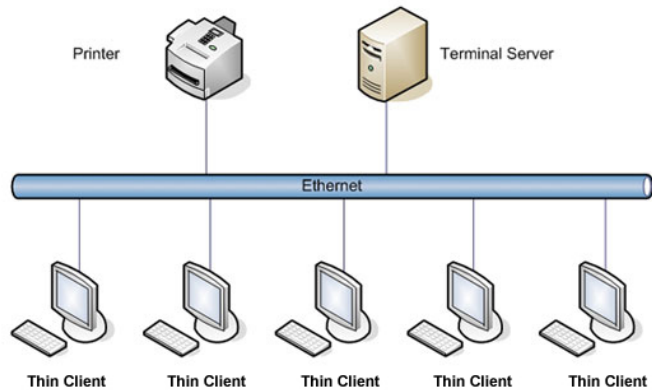


SUNDE 800L



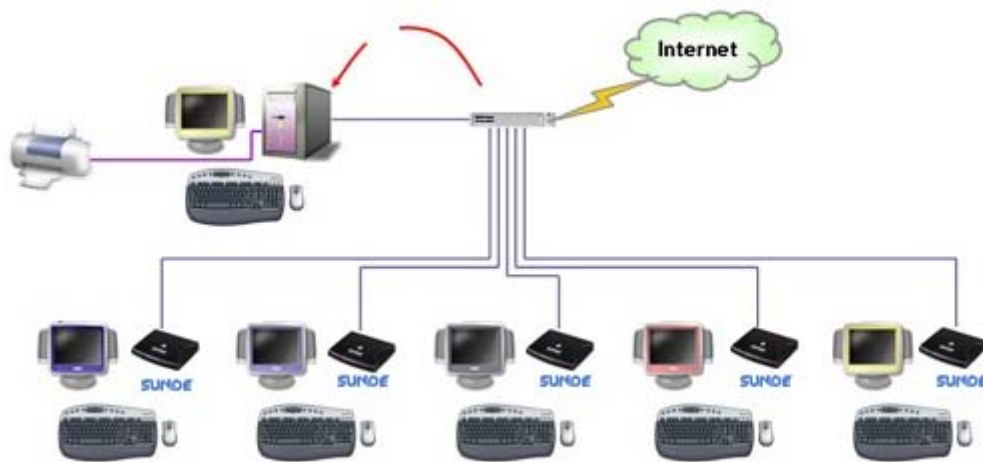
Product Overview

The SUNDE 800L incorporates the Dirty Matrix Protocol into a compact access terminal that connects over Ethernet to the shared host PC. SUNDE 800L connect to the internet through many standard TCP/ IP protocols, and make many users sharing simultaneously one standard PC come true. This can help the customers save the total cost of ownership. SUNDE 800 L-series can be suitable to use in Enterprises, schools, train centers and all various environments. You can use the internet wire line to connect the terminal and the standard PC. You also can use HUB, Switch hub, or Router to connect them or even through the internet. If you need USB flash drive access in addition to the peripherals listed above, SUNDE 880L is your best choice.

SUNDE 800L is the independent terminal based on MIPS idea, we also adopt the design technology of 32 bits Soc Chips. Then this product can cost lower electricity consumption, but can run fast and have the perfect display effect.; it is a computer terminal without CPU, HDD and Memory. These terminals share the resources of the host computer, such as CPU, memory, hard disk, driver. The operation is the same as the host PC.

SUNDE 800L Benefits:

- ▣ Supports system: **Windows VISTA, Windows 2008, Windows XP PRO, Windows Server 2003, Linux.**
- ▣ **Share one PC with at least 20 users.**
- ▣ Dramatically reduce the capital cost and electricity consumptions.
- ▣ Supports the output audio speaker and with perfect voice effect.
- ▣ Easy to set up, maintain, and secure.
- ▣ Supports **USB mouse, keyboard, USB disc, barcode scanner**, etc.



SUNDE 800L Working principle

At present, PC becomes so strong, especially the available resource of host system. SUNDE 800L can visit such strong functional PC effectively. Each SUNDE 800L can be as the independent operating terminal which creates independent and secure environment that does not influence other terminals and its host PC. SUNDE 800L makes use of the characteristics of computer's extra operating, then Users can both visit the internet and office simultaneously.

SUNDE 800L Solutions

Adopting the SUNDE 800L solution, not only the multi-user can use the hard, soft resources and all of the outer equipments of the host, such as browse the web, play net games and ASP, instant messenger, send private email etc. but also can use the Windows applicant software such as office software, multi-media. You do not need to buy complicate and expensive computers.

Firstly, installing the software attached in the host, then connect the SUNDE 800L to the host through Switch HUB/Router.

if you want to add another work station under the configuration of the sever, you just need to add the equipment as below: 1 display, 1 SUNDE 800L, 1 keyboard, 1 mouse., then you will get the same operating environment as the host PC.

Support high Resolution & Wide Screen

Support 640x480, 800x600, 1024x768, 1280x720.... 16 bit color (65,536 colors)

Contrast to standard computer:

	Standard PC	SUNDE 800L
Cost	(1)One computer for one user (2)Min 250watts power consumption for one standard PC (3)charge for the replacement & upgrade of the standard PC parts in every 2 to 3 years	(1) Max.40units of SUNDE 800L can be connected to a standard PC, and then we have 41 computers to use. (2)only 5 watts power consumption (3) no charge for the parts of the terminal. Can update through internet.
Security	(1)Easy to illegal data leakage & Exposure. (2)easy destructed by Virus and computer hacking	(1)SUNDE 800L doesn't utilize external storage.
Service/Maintenance	Have to control each individual computers	Controlling just host computers highly effective centralized control(program installation, deletion, and maintenance)

Environment	Heats and noises from CPU, VGA, HDD, Power Supply Fan, Small working environment	No noise, only pleasant and quiet working environment.
Portability	Not available	Portable terminal can be connected with host computer anywhere when internet is ready

This product is intended to reduce H/W deployment and maintenance costs. Additional software licenses may be required by the software licensors. Please check your software user license agreement to ensure your continued compliance with such agreement.

Recommend Host PC configuration:

According SUNDE 800L of the use of quantitative recommendation Host Configuration:

Recommended Host PC Configuration						
Recommend host PC Configuration which applies to Windows XP, Windows 2003,LINUX operating systems:						
SUNDE	1-3	4-6	7-10	11-20	21-30	31-40
Host PC CPU	1.3Ghz Pentium 4 above	2.4Ghz Pentium 4 above	3.0Ghz Pentium 4 above	3.2Ghz Pentium 4 above	2.53Ghz Core 2 Duo above	3Ghz Core 2 Duo above
Host PC Memory	512MB above	768MB above	1GB above	2GB above	3GB above	4GB above
Host PC Hard Drive	7200RPM above	7200RPM above	7200RPM above	7200RPM above	10000RPM above	10000RPM above
NOTE: you can connect at most 20 sets SUNDE terminals in windows xp,windows Vista.						
Recommend host PC Configuration which applies to Windows Vista, Windows 2008 operating systems:						
SUNDE	1-3	4-6	7-10	11-20	21-30	31-40
Host PC CPU	3.0Ghz Pentium 4 above	3.2Ghz Pentium 4 above	2.53Ghz Core 2 Duo above	3Ghz Core 2 Duo above	2.33Ghz Core 2 Quad above	2.5Ghz Core 2 Quad above
Host PC Memory	1GB above	2GB above	3GB above	4GB above	5GB above	6GB above
Host PC Hard Drive	7200RPM above	7200RPM above	7200RPM above	10000RPM above	10000RPM above	10000RPM above

Product Specifications:

power	INPUT AC110V ~ 240V 50/60 Hz, OUTPUT DC 5V/2A
size	168mm(W) x 30mm(H) x 138mm(D)
Weight	500g
Port	DC Power Jack, Speaker Jack, PS2 Keyboard Port, PS2 Mouse Port,Ethernet (RJ- 45) Port, Video Monitor Port
Protocol	NETPOINT5.1, RDP, ICX
Supported OS	VISTA, Windows XP Professional, Windows 2008, Windows Server 2003, LINUX