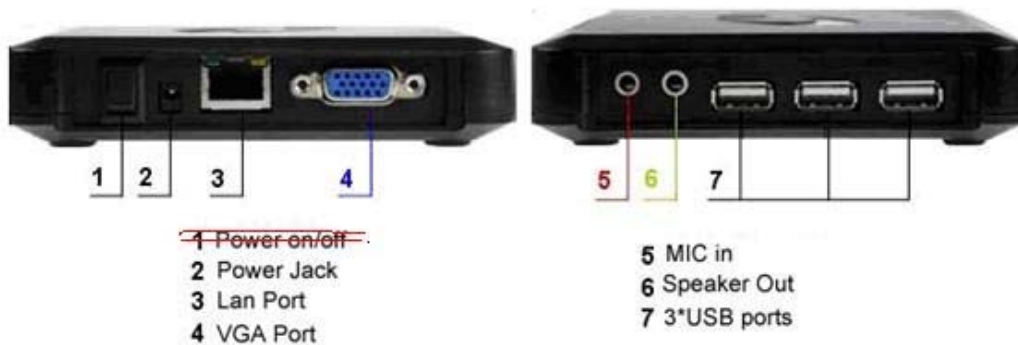


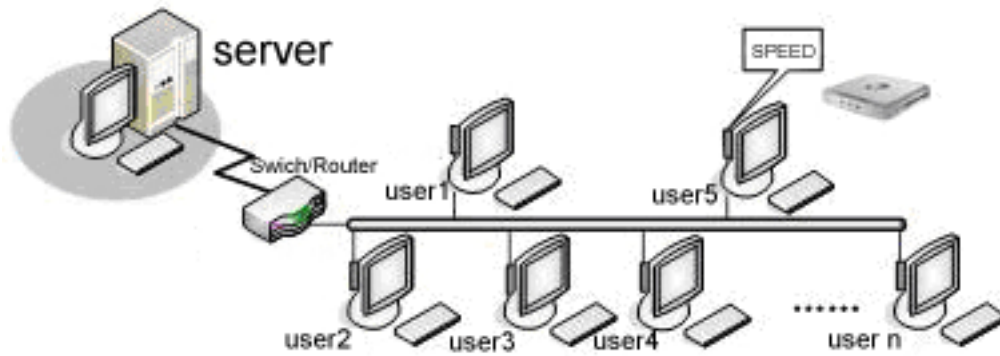
## SPEED Cloud Computing Terminal

### Model: SPEED-TY310



**Remark:** the details port pls check by below picture, the difference is the power on /off button , we design on the top of the device , pls kindly check above image.





## Contents

|   |   |
|---|---|
| Preface.....  | 3 |
| 1. Cost saving.....   | 3 |
| 2. Unified management and minimal maintenance.....                        | 3 |
| 3. Safe from internet virus. ....   | 3 |
| 4. Smart hardware design.....   | 4 |
| 5. Going green.....   | 4 |
| 6. No installation and limitless connection.....                          | 4 |
| Technological innovation & characteristics.....                           | 5 |
| 1. Dual-working style.....  | 5 |
| 2. 10-second Quick Start function and nice print function supported ..... | 5 |
| Cloud Computing Terminal working mode .....                               | 5 |
| 1. Sharing work mode .....  | 5 |
| 2. Mini PC mode.....  | 6 |

Particularly suitable user group ..... 6  
Datasheet..... 6

## **Preface**

Busy running around for a Economical and Higher performance computer?  
Distressed for the high charges for your software and electricity?  
Feel hard for the frequent software upgrades and complex management& maintenance for your computers?  
Feel helpless for the spread of the network viruses?  
Now the solution comes. Check [www.szkingroad.net](http://www.szkingroad.net) for more details of this kind product.  
Main advantages

### **1. Cost saving.**

SPEED Cloud Computing Terminal cost only 10% to 20% of a typical desktop computer. The design of integrating hardware and software together gives SPEED Cloud Computing Terminal unparalleled advantage in cost saving.

SPEED VDP technology and the free software enclosed in the product can make the HOST resources shared by all users easily. Now you don't need to purchase Windows permission, a lot of hardware and software cost can be saved.

The only thing you need to do is connecting your mouse, keyboard and monitor to the SPEED Cloud Computing Terminal, then you can surf the internet, and do your office work and so on.

### **2. Unified management and minimal maintenance.**

All the upgrading and maintenance are done on the HOST (Server), no need to care about the SPEED Cloud Computing Terminal. Real zero maintenance for SPEED Cloud Computing Terminal.

### **3. Safe from internet virus.**

Data stored in the HOST (Server), not the SPEED Cloud Computing Terminal, so it is very safe. And SPEED Cloud Computing Terminal is impossible for virus infection, so it is perfect in

anti virus function.

#### **4. Smart hardware design.**

The smart SPEED Cloud Computing Terminal only takes 115\*115\*26mm room, with the mounting bracket enclosed in the package, you can fit the SPEED Cloud Computing Terminal to the backside of the LCD monitor, so it takes no extra room, makes your desk tight and beautiful.



#### **5. Going green.**

SPEED Cloud Computing Terminal cost only 5 watts power consumption, running without cooling fan. No noise and low radiation, very green and environmental.

#### **6. No installation and limitless connection**

Only need 10s to start, no need to install device on host computer. No distance limit to connect to other computer, use IP address, you can even connect to other over sea's computer!

# Technological innovation & characteristics

## 1. Dual-working style.

Not only have the high-resolution displayed capacity of the network computer, but also enjoyment of your own vision VDP (Virtual Desktop Protocol)

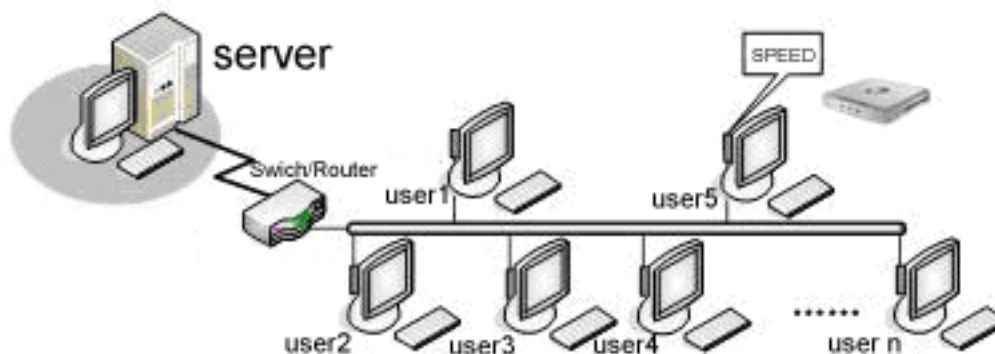
SPEED Cloud Computing Terminal pioneering support both sharing computing and mini PC mode, so it can work as a client connect to server while at the same time, it can also finish most daily work independently. General network computer cannot support high-resolution display due to the limitation of both hardware and software, so the applications of network computer limited within small scope. SPEED Cloud Computing Terminal support up to 1280\*1024 or 1440\*900 display resolution, so we can enjoy the same vision enjoyment.

## 2. 10-second Quick Start function and nice print function supported

Compared to the long time starting process of traditional desktop computer, SPEED Cloud Computing Terminal may bring you super surprise; it takes only 10 seconds to start. SPEED Cloud Computing Terminal support printing function under both working modes, overcomes the traditional limitations of network computer.

# Cloud Computing Terminal working mode

## 1. Sharing work mode



With SPEED VDP technology, you can set up sharing cloud computing network, the desk of SPEED Cloud Computing Terminal use the resources of the main HOST, and run remote desktop. It works just like a full typical desktop computer.

## 2. Mini PC mode

SPEED Cloud Computing Terminal can work as a stand alone mini computer. You can surf internet, enjoy cloud computing, run simplify Office software and even download data to your USB flash memory or other moving HDD.

## Particularly suitable user group

1. Window service industries: Banking, Taxation, Insurance, Securities, health, etc.
2. Education field: Network classrooms, Libraries, Student hostels, etc.
3. High security requirements agencies or departments: Design Institute, Government Departments and the company's R&D department, etc.
4. Public: Airports, Railway stations, Streets, Offices, etc.
5. Hotels: with SPEED Cloud Computing Terminal, you don't need to worry for customers' demolition and replacement of the HOST computers.
6. Customers who want a machine purely used for surfing.
7. Others, like real estate business, convention centers, exhibition halls, etc.

## Datasheet

1. The specs are: Dimension 115mm\*26mm\*115mm (L\*H\*W)
2. Weight 0.5kg
3. Power Input: 100-240V, 50/60Hz; Output:5V/2A
4. Firmware feature Windows CE 6.0 integrated RDP protocols
5. Onboard CPU ARM11 800MHz
6. Memory Onboard 128MB RAM
7. Storage Onboard 64MB Flash
8. Display support Max 1280\*1024@85Hz,16bit/24 true/32 true colors; Widescreen 1440\*900 support
9. Management Remote management, configuration;
10. Wake terminal remotely (Wake-on-Lan)
11. Onboard LAN 10/100 Mb/s
12. Operating range 3k meters

13. Support Wireless through a USB-WIFI-Card or buildin WIFI .
14. Ports: 1 RJ-45 LAN port; 3 USB 2.0 ports; 1 DC in port; 2 Audio jacks: speaker-out and mic-in;
15. Server OS support: Windows XP, Windows Server 2000/2003, Windows Vista, Windows 7.