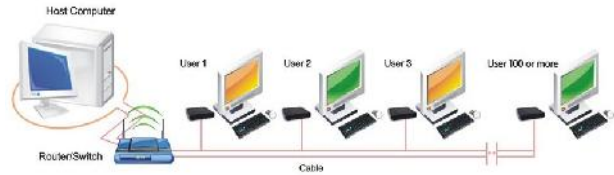




## Thin Client: FL300



<b>Model Number</b>	<b>FL300</b>	
Framework	ARM-A9	
Processor	Dual Core 1.5 Ghz	
Built-in OS	Embedded linux 3.0 OS	
RAM	1 GB	
Video	VGA Resolution	800*600/1024*768/1366X768/1440*900/ 1280*1024/1280*720/1920*1080
	HDMI Resolution	1280*720/1920*1080(MAX)
USB port	USB2.0 port×3	
ROM	4 GB flash	
Video	1080P	
Upgrade	Firmware Update	
Physical Dimensions (mm)	164×116×32MM	
Weight	200g	
Power supply	DC 5V/2A	
Energy consumption	Static Power less than 5W,Maximum Power less than 7.5W	
Protocol	RDP 7.1	
External port	HDMI, VGA, USB*3, RJ45, Power supply port,Switch port	
Working Temperature	-20 ~50°C	
Video format supported	WMV,AVI,MP4,RM,RMVB,FLV,MKV	

## Server Configuration for FL300:

User Number	CPU	RAM	HDD
Below 10 users	Intel Core Duo 2.0GHZ or above	2GB-4 GB	500GB
10-20 users	Intel Core Duo 2.0GHZ above or Quad-Core	4GB-8GB	500GB
20-30 users	Core Quad-Core 2.6GHZ above	8GB	1TB
30-50 users	Xeon dual-core 2.3GHZ above or Quad-Core	8GB-16GB	1TB-2TB

