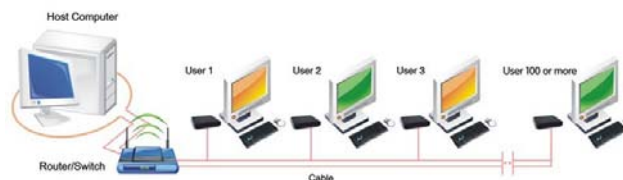


WIN CE Thin Client: N380T



N380T specifications

Motherboard	CPU chipsets	CLG7700 800MHz With ARM11
Memory	Memory	128MB
Storage	FLASH	128M
Input /Output	VGA USB 2.0	x 1 x 3
Network	LAN	x 1(10/100 Base-T Fast Ethernet,RJ-45)
Display	Resolution	Up to 1440*900*32-bit true color,60HZ
Voice	Line-out Mic-in	Output 1/8-inch mini, full 16-bit stereo Input 1/8-inch,8-bit mini microphone
Packing size	Size /Weight	Terminal Box:140mm(L) x 140(W) x 65mm(H) /0.5kg
Power supply	Adapter Consumption	Worldwide auto-sensing 100-240V AC, 50/60 Hz Less than 10 watts power usage

Data sheet:

1. The specs are: Dimension 115mm*26mm*115mm(L*H*W)
2. Weight 0.6kg
3. Power Input: 100-240V, 50/60Hz; Output: 5V/2A
4. Firmware feature Windows CE integrated RDP protocol
5. Built-in Windows CE6 OS
6. Onboard CPU ARM11EJ 800MHz
7. Memory Onboard 128MB RAM
8. Storage Onboard 128MB Flash
9. Display support Max 1280*1024, 32bit
10. Onboard LAN 10/100 MB/s
11. Operating range 3k meters
12. Ports: 1 RJ 45 LAN port; 3 USB 2.0 ports; VGA port,1 power port;
2 Audio jacks: Speaker-out and mic-in;
13. Server OS support Windows Server 2000/2003,/2008/windows XP/Linux/Vista/ Windows 7